



This PDF is generated from authoritative online content, and is provided for convenience only. This PDF cannot be used for legal purposes. For authoritative understanding of what is and is not supported, always use the online content. To copy code samples, always use the online content.

User's Guide

Configuring Pulse

5/9/2025

Configuring Pulse

Steps to enable the Pulse features available for Context Services in the GAX interface. If you configure Pulse options, you will get widgets including Context Services statistics in your **Pulse Dashboard**.

Contents

- **1 Configuring Pulse**
 - **1.1 Steps**

Pulse is a widget-driven, graphical user application, which is accessible from a web browser as a Genesys Administrator Extension (GAX) plug-in application. Using a direct communication link to a real-time metrics engine, Stat Server, Pulse enables at-a-glance views of real-time contact center statistics within the GAX user interface.

Context Services installation already includes default templates for Pulse. If you configure Pulse options, as detailed below, Context Services pushes events to the Stat Server for Pulse which are then available for users in the Pulse dashboards and widgets.

Important

See the [Pulse portal page](#) for detailed documentation on this tool.

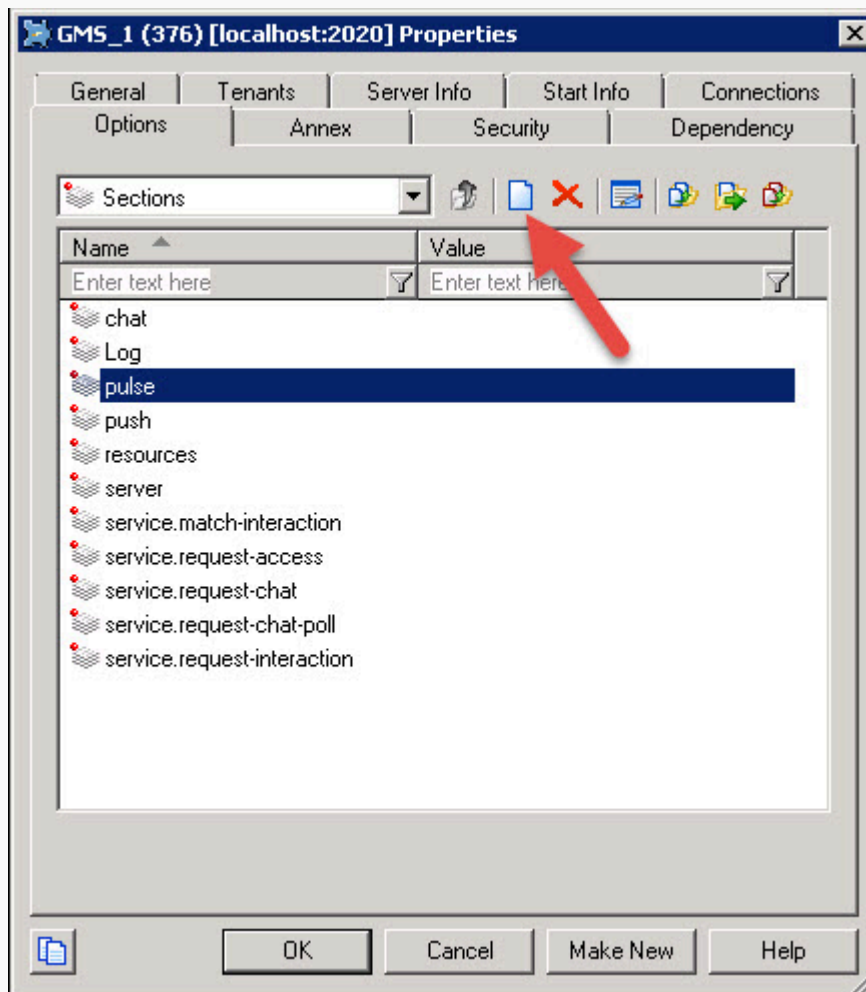
Procedure: Configuring Pulse Options

Purpose: To create and configure the pulse section

- You already **activated** Context Services.
- You already **deployed** Pulse.

Steps

1. Start the Configuration Manager and navigate to **Applications**.
2. Edit your Context Services application.
3. Select the Options tab, and click the New button to create a new section.
 - Enter pulse for the Section.



4. Select the section and click the New button to create the following options:
 - Enter enabled for the Name, then true for the Value. Click **OK**.
 - Enter user for the Name, then a username who has Pulse authorizations for the Value. Click **OK**.
 - Enter password for the Name, then the username's password for the Value. Click **OK**.
 - Enter servers for the Name, then a list of one or more URLs separated by semicolons which point to Pulse applications for the Value; for instance: "http://gax1dev:8283/gax;http://gax2dev:8283/gax". Click **OK**.
 - Enter version for the Name, then "2" for the Value. Click **OK**.

