



This PDF is generated from authoritative online content, and is provided for convenience only. This PDF cannot be used for legal purposes. For authoritative understanding of what is and is not supported, always use the online content. To copy code samples, always use the online content.

## Composer Help

Perspective Switcher Toolbar

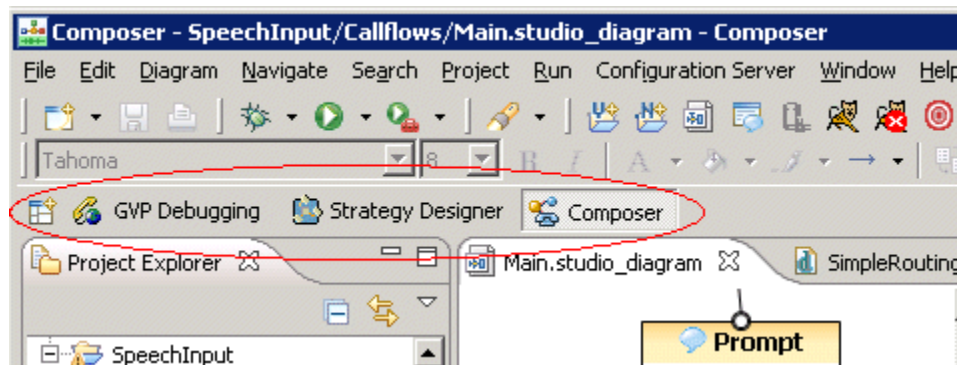
---

## Contents


- 1 Perspective Switcher Toolbar
  - 1.1 Open Perspective Button
  - 1.2 Perspective Switcher Toolbar
  - 1.3 Shortcut Menu for Perspective Buttons

# Perspective Switcher Toolbar

**Perspectives** are task-oriented layouts for organizing the views and windows in your workbench. The Perspective Switcher Toolbar allows quick access to perspectives that are currently open.



## Open Perspective Button

An **Open Perspective** button  (displaying all Eclipse perspectives) is located at the start of the Perspective Switcher toolbar. In the above figure, it is located in front of the GVP Debugging button.

## Perspective Switcher Toolbar

The Perspective Switcher Toolbar is normally positioned below the main toolbar (top-left), but you can also position it vertically on the left-hand side of the workbench.

## Shortcut Menu for Perspective Buttons

Right-clicking the button for an active perspective opens a shortcut menu. The first three entries in the table below do not appear if the perspective is not selected.

Customize	Opens the customize perspective dialog box.
Save As	Opens a dialog box for saving a customize perspective. Once saved, the customize perspective appears in the list that opens when you click the Open Perspective button.
Reset	Resets the changes you made to a perspective.
Close	Removes the button for the perspective.

Dock On	Allows you to dock the perspective button: Top Right, Top Left, or Left (left-hand side of work bench).
Show Text	Toggles between an icon and text on the perspective button.