



This PDF is generated from authoritative online content, and is provided for convenience only. This PDF cannot be used for legal purposes. For authoritative understanding of what is and is not supported, always use the online content. To copy code samples, always use the online content.

Composer Help

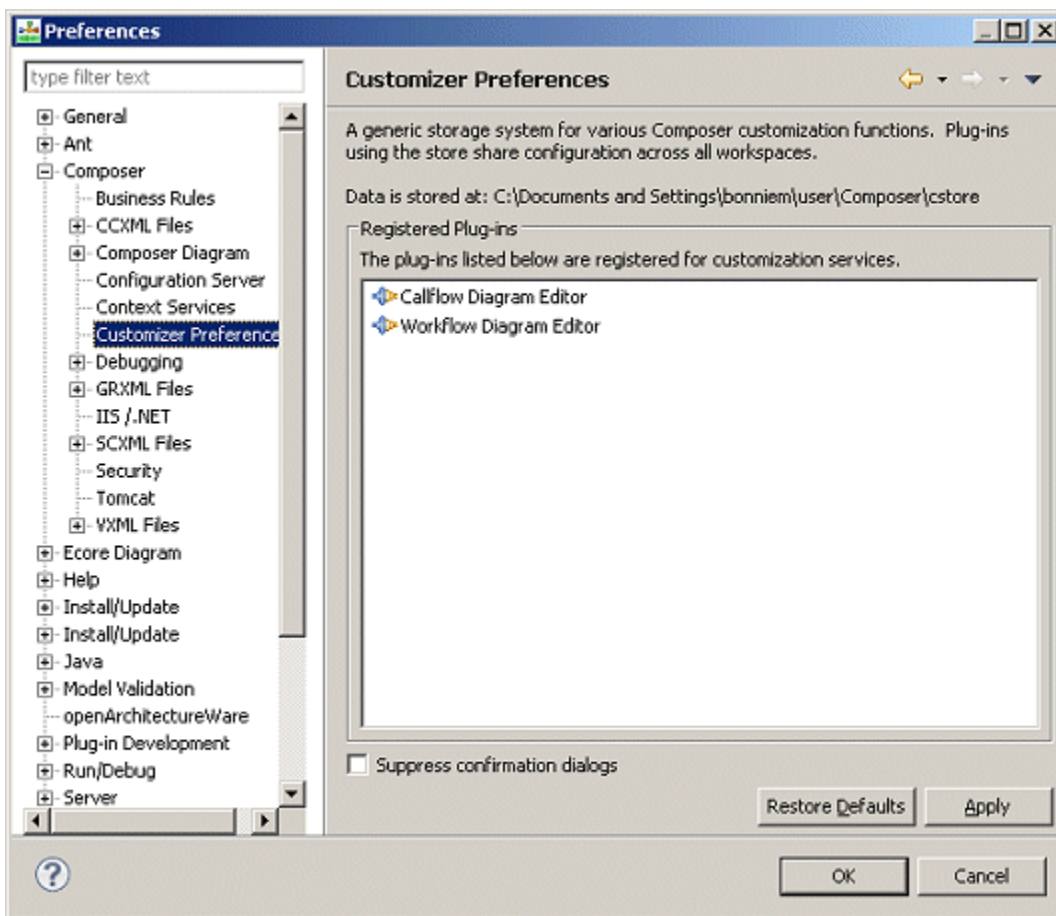
Customizer Preferences

12/12/2025

Customizer Preferences

To bring up Customizer Preferences:

1. Click the **Window** menu.
2. Select **Preferences**.
3. Expand **Composer**.
4. Select **Customizer Preferences**. The Customizer Preferences dialog box opens. The Callflow Diagram Editor and Workflow Diagram Editor customization plug-ins are display only and can be used for debugging.



The Customizer

Preferences dialog box:

- Reports on the location of the storage area (cstore directory) on disk. Diagrams that you save as templates are stored here.
- Lists registered plug-ins as shown in the Customization Manager view.
- Allows you to suppress confirmation dialogs associated with plug-ins. If checked, it suppresses the

success/failure indicator message when you save a diagram as a template.