



This PDF is generated from authoritative online content, and is provided for convenience only. This PDF cannot be used for legal purposes. For authoritative understanding of what is and is not supported, always use the online content. To copy code samples, always use the online content.

Deployment Guide

GWM Proxy

12/15/2025

GWM Proxy

Contents

- **1 GWM Proxy**
 - 1.1 Configure GWM Proxy Host and Port
 - 1.2 Instrument the Site Through the Proxy
 - 1.3 Start the Proxy
 - 1.4 Set up your Web Browser

The GWM Proxy included in the Co-browse Server installation package is a development tool that enables you to test Co-browse without adding the instrumentation JavaScript code snippet to your website.

Complete the procedures below to configure and run the GWM Proxy.

Configure GWM Proxy Host and Port

Start

1. Navigate to C:\Users\<current user>\GWMPProxy. If this folder does not exist, this means that the proxy server has never been started. Navigate to <Co-browse_installation>\tools\proxy and start the server with startserver.bat. This will automatically create the GWMPProxy folder.
2. In the GWMPProxy folder, open the config.xml file for editing.
3. Find the <proxy> tag and make sure the value of its child <ip> tag is set to your host IP address.

Important

This value must **not** be 127.0.0.1 or localhost.

4. Note the value of the <port> tag (usually 15001) — you will use this to [Set up your Web Browser](#).

```
<proxy>
  <ip>192.168.44.83</ip>
  <port>15001</port>
  <reverseProxy>
    ...
  </proxy>
```

End

Instrument the Site Through the Proxy

Set the Domain Names

Start

1. Navigate to <co-browse_installation>\tools\proxy\ and open the map.xml file for editing.
2. In the <map> tag, set the value of the domains attribute to the domains of the site you would like to use the proxy. Separate each value in this list with a semi-colon.

```
<?xml version="1.0"?>
  <mapping>
    <map replace="..."
```

```
domains="www.genesys.com;genesys.com;programs.genesys.com;content.genesys.com">
```

End

Adjust the Instrumentation Script

You can modify the default script included in the **map.xml** file according to your needs:

- update the host and port for Co-browse Server
- add JS Configuration API objects

Important

Do not forget to restart GWM Proxy after making modifications to the **map.xml** file so that your changes will take effect.

Start the Proxy

Navigate to your Co-browse installation directory and then launch `tools\proxy\startserver.bat`. The GWM Proxy starts.

Important

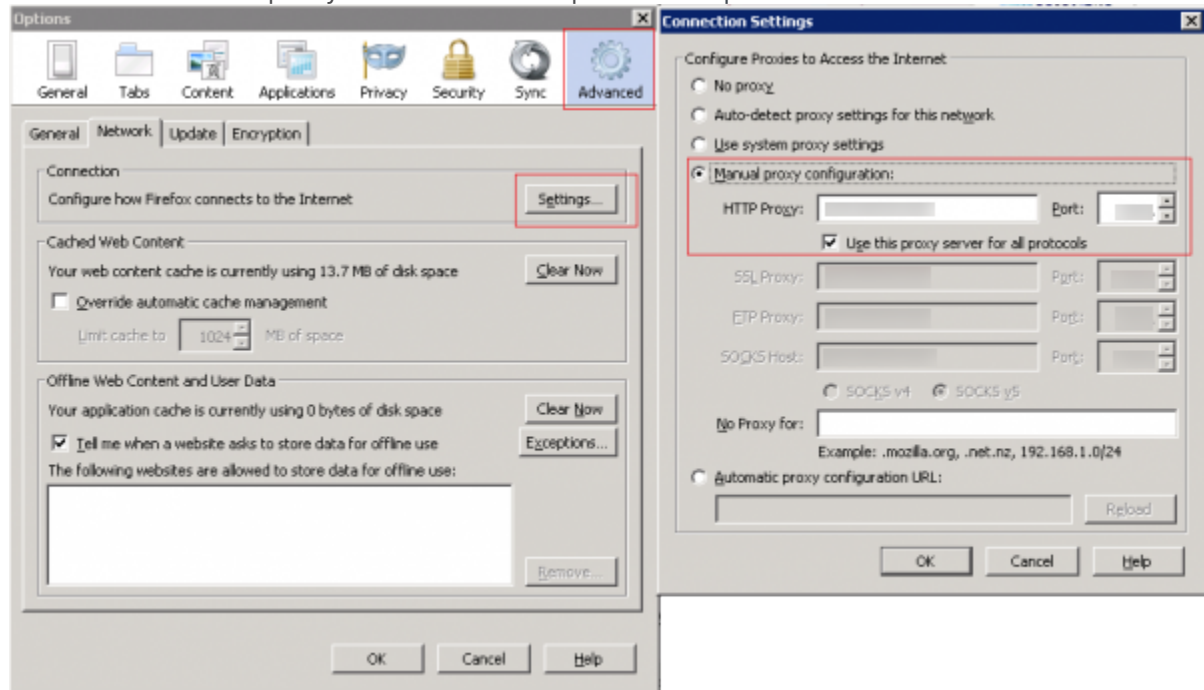
The GWM Proxy included in the Co-browse installation package cannot work if the full path contains spaces.

Set up your Web Browser

Start

1. Start your web browser.
2. Open your Internet settings. For instance, in Firefox, select `Tools > Options`. The Options dialog window appears.
3. Select `Advanced` and in the `Network` tab, click `Settings...` The `Connection Settings` dialog window opens.
4. Select the `Manual proxy configuration` option and do the following:
 - Enter your host IP address in the `HTTP Proxy` text box.
 - Enter the port used by the GWM Proxy in the `Port` text box. This is the port you made note of in [Configure GWM Proxy Host and Port](#).

- Select the Use this proxy server for all protocols option.



GWM Proxy used in Firefox

- In the "No Proxy for:" text box, list the IP address or domain name as it appears in the data-gcb-url attribute of the Co-browse JavaScript (see [Basic Instrumentation](#)). This ensures that communication with Co-browse server is not proxied. **Note:** If the proxy and Co-browser Server are running on the same machine, this value will be the same as the IP in the HTTP Proxy text box.
5. Click OK. Now your browser is using the GWM Proxy, which will inject the Co-browse JavaScript code into the web pages of the monitored domain you specified in [Set the Domain Names](#).

End