



This PDF is generated from authoritative online content, and is provided for convenience only. This PDF cannot be used for legal purposes. For authoritative understanding of what is and is not supported, always use the online content. To copy code samples, always use the online content.

Deployment Guide

Cassandra Configuration

12/19/2025

Cassandra Configuration

Important

Starting in 9.0.005.15, Cassandra support is deprecated in Genesys Co-browse and **Redis** is the default database for new customers. Support for Cassandra will be discontinued in a later release.

Important

Starting from 9.0.014.XXX, Co-browse Server does not support External Cassandra and therefore, does not supply **Cassandra_Resource_Access_Point_900** application templates.

Contents

- **1 Cassandra Configuration**
 - **1.1 Overview of Cassandra Access and Management**
 - **1.2 External Cassandra Cluster Access Configuration**

This page describes Cassandra configuration in Genesys Co-browse.

Overview of Cassandra Access and Management

- Co-browse server can be interconnected with an external Cassandra cluster.
- Genesys Co-browse configuration is now similar to configuration of GWE and UCS.
- Co-browse uses Cassandra 2.X. For supported versions of Cassandra, see [Genesys Co-browse in the Supported Operating Environment Reference Guide](#).

Co-browse Keyspace Configuration

Keyspace specific options are kept in a dedicated configuration section, [cassandraKeyspace Section](#). These options apply to external Cassandra.

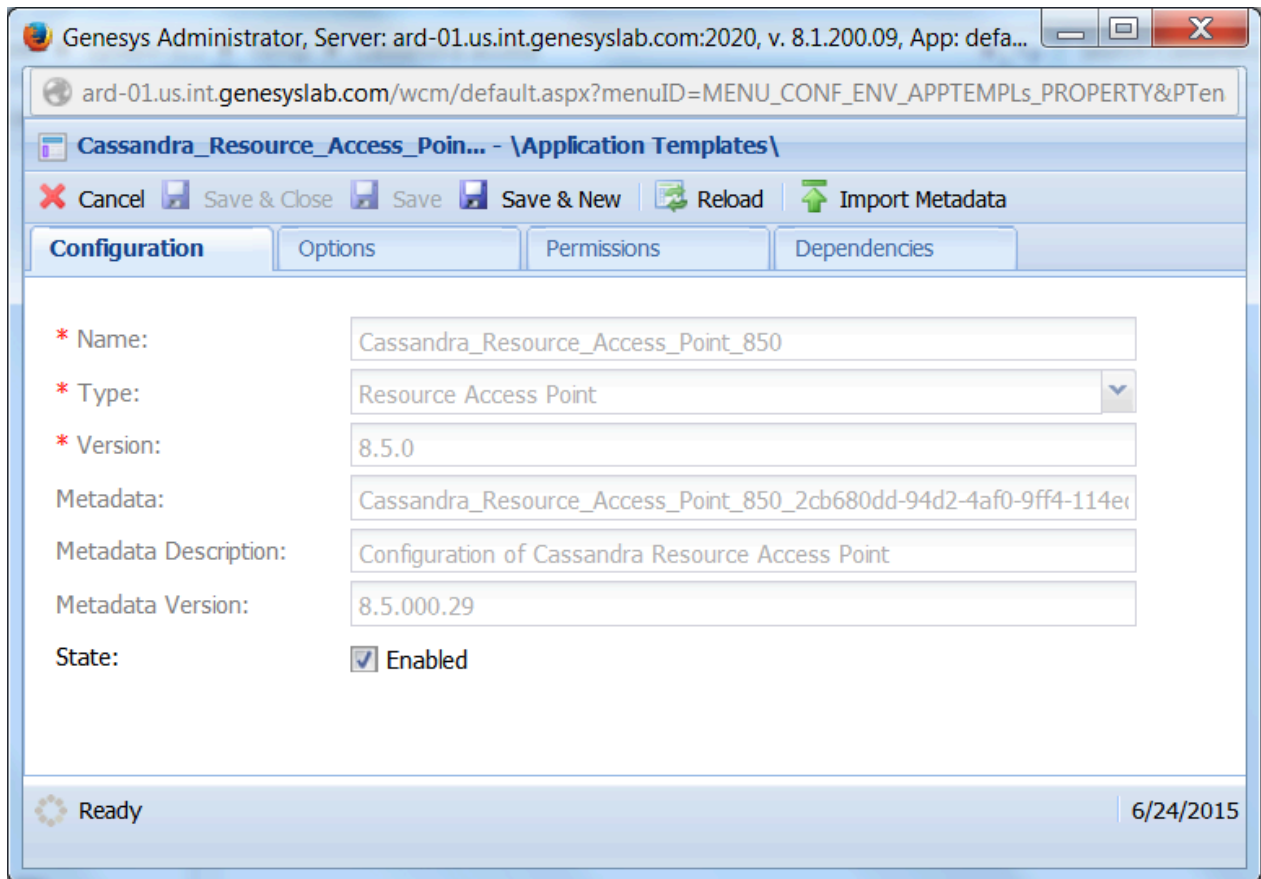
External Cassandra Cluster Access Configuration

You can use a dedicated Cassandra Resource Access Point in Configuration Server to link a Co-browse server to an external Cassandra cluster.

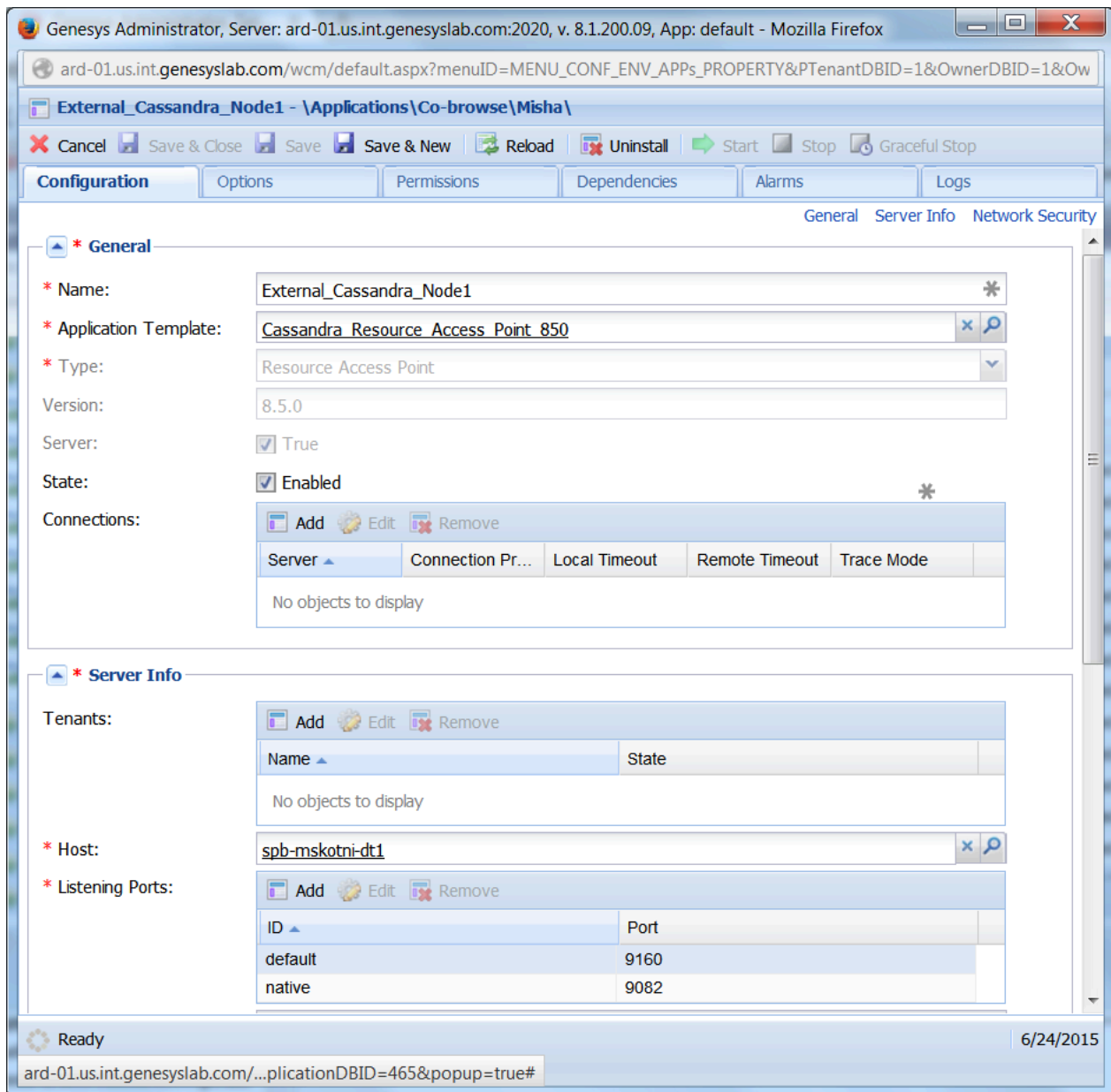
Procedure: Create a Dedicated Cassandra Resource Access Point

Start of Procedure

1. Import the templates `Cassandra_Resource_Access_Point_900.apd` and `Cassandra_Resource_Access_Point_900.xml`

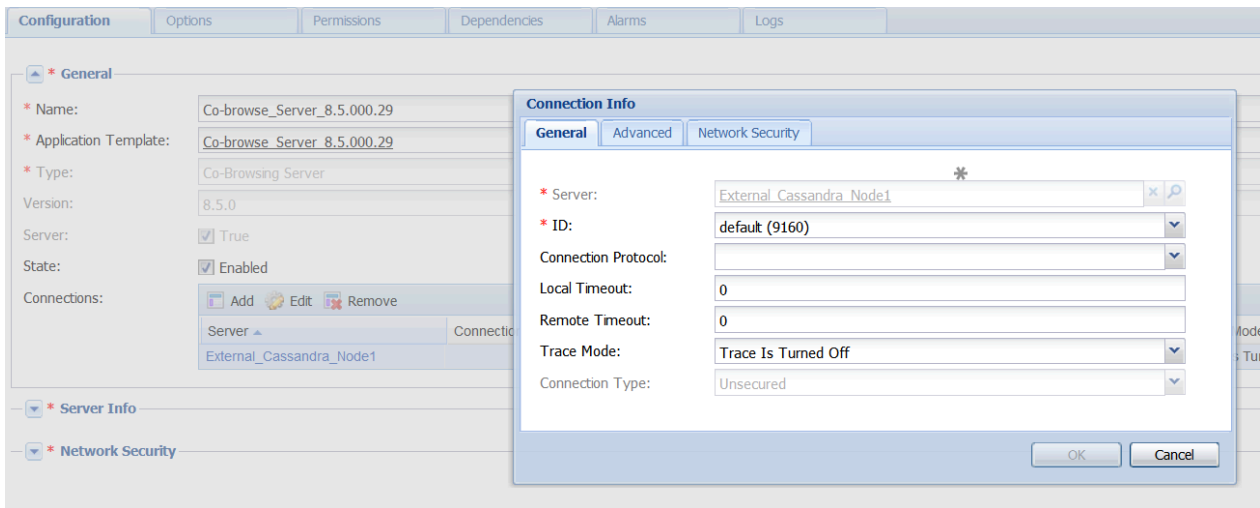


2. Using the imported application template from the previous step, create one Cassandra Resource Access Point(RAP) for each Cassandra node in an external Cassandra cluster that the Co-browse server needs to communicate with. Configure the following:
 1. For Host, specify the host of the external Cassandra Node
 2. Add a default port with the value of the rpc port the Cassandra node is using to listen for Thrift client connections. Optionally, specify rpc protocol for the port.
 3. Add a native port with the value of the CQL native port the Cassandra node is using to listen for CQL client connections. Optionally, specify native protocol for the port.



3. Configure Cassandra RAP Connections:

- Add Cassandra RAP connections to the Co-browse Cluster application object.



Several connections with different Cassandra RAP applications ensures a redundancy of connections to the external Cassandra cluster. If one Cassandra node in the cluster fails, Co-browse server will be able to cooperate with the external Cassandra cluster through a different Cassandra node.

End of Procedure