



This PDF is generated from authoritative online content, and is provided for convenience only. This PDF cannot be used for legal purposes. For authoritative understanding of what is and is not supported, always use the online content. To copy code samples, always use the online content.

Deployment Guide

[View Metrics with JMX](#)

View Metrics with JMX

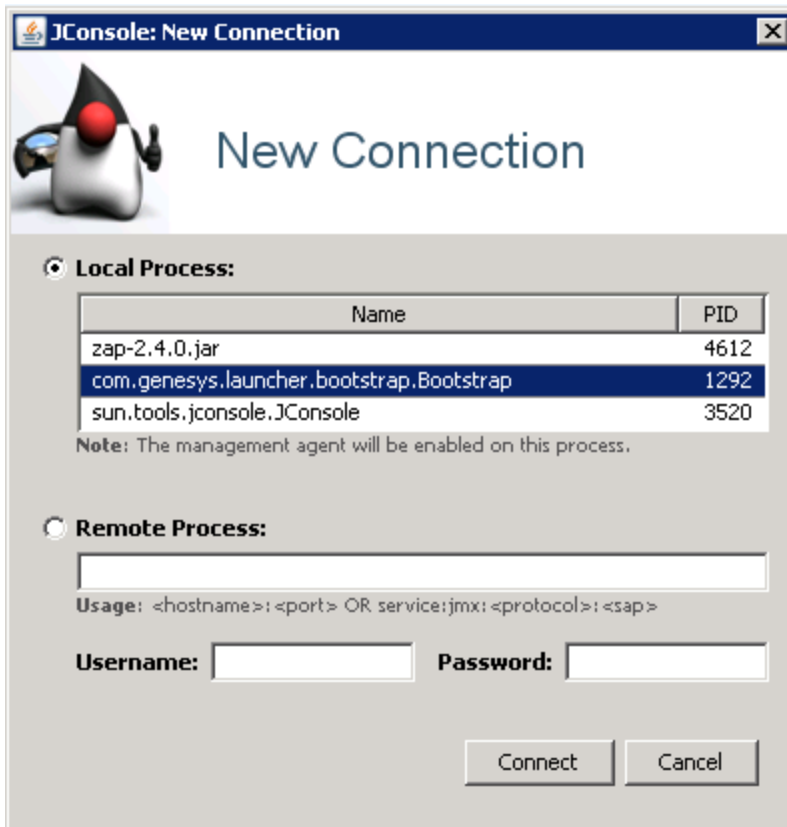
You can use **JConsole** to view metrics provided by your Web Engagement Server. To do this, you can start Web Engagement Server as a:

- **Local java process**
- **Server on a remote host**
- **Windows service**

Once you have connected, you can view your metrics in a JConsole **JMX panel**.

You may also want to look into some of the **other tools** that are available for viewing your Web Engagement metrics.

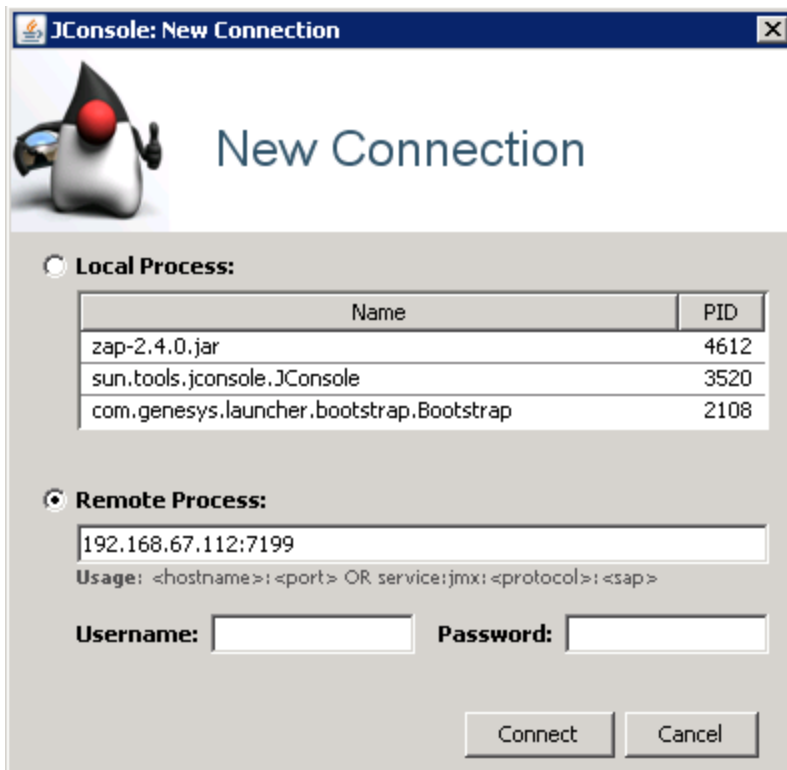
Connect to Web Engagement started as a **local java process**.



1. Run **jconsole.exe** from the **jdk/bin** directory.
2. In the **New Connection** dialog, specify the Web Engagement launcher java process.

If the Web Engagement Server was started via a BAT file in the same host where the JMX console is opened, this launcher process is the **com.genesys.launcher.bootstrap.Bootstrap** process from the **Local Process** list.

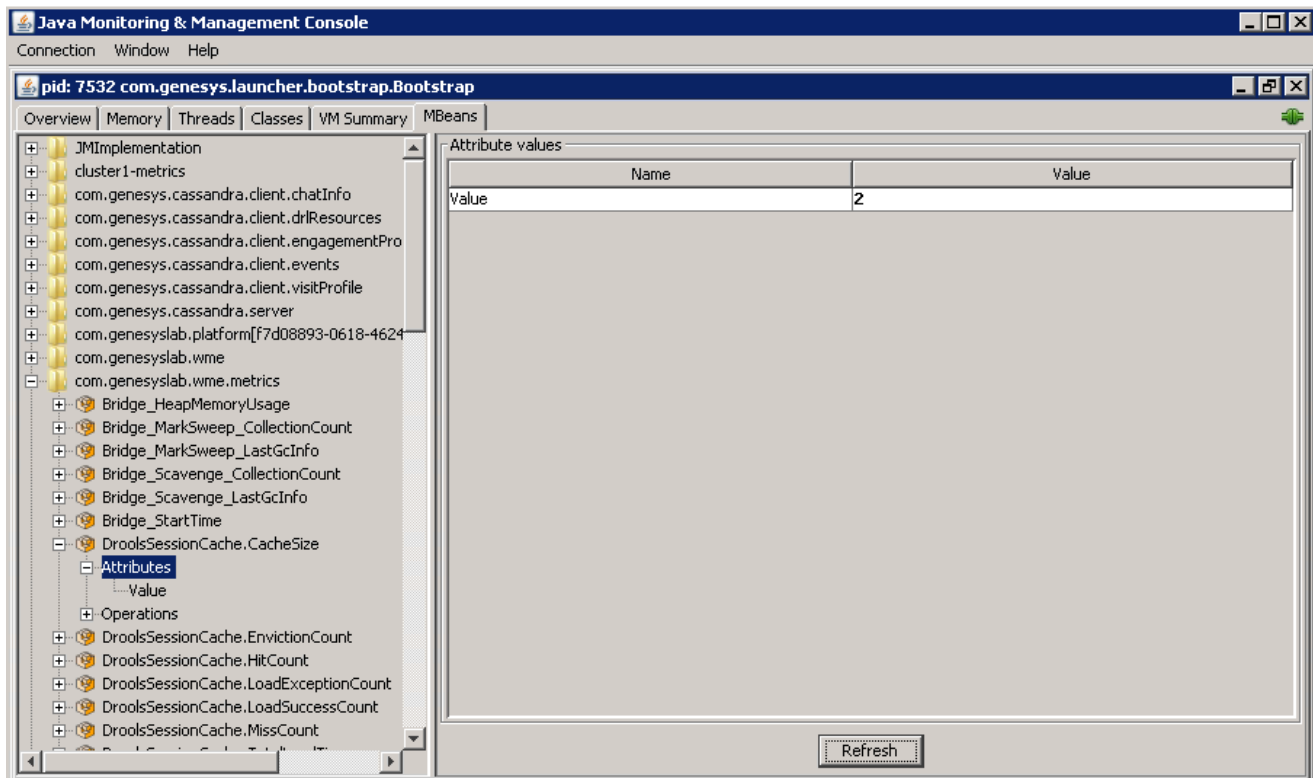
Connect to Web Engagement Server started on a **remote host**.



If the Web Engagement Server was started remotely as a server, follow these steps:

1. Run **jconsole.exe** from the **jdk/bin** directory.
2. Open the **launcher.ini** file and uncomment all of the lines that appear under the following:
; uncomment and configure the properties below to use JMX
3. Save your changes.
4. Restart the Web Engagement Server application.
5. Specify **host:JMX port** in the **Remote Process** section, as shown in the screenshot on the left.

Open the JMX panel to view the metrics.



1. Click **Connect** in the **New Connection** dialog. The JMX panel opens.
2. Open the **MBeans** tab and expand **com.genesyslab.gemc.metrics**. All of the Web Engagement metrics are there.
3. To refresh the metrics, click **Refresh**.

Other Tools

We have just explained how to use the JConsole tool bundled with Oracle Java (TM) to view your metrics, but there are several other tools you can use to do this:

- The EJTools JMX Browser
- Panoptes
- jManage
- MC4j
- Zabbix