



This PDF is generated from authoritative online content, and is provided for convenience only. This PDF cannot be used for legal purposes. For authoritative understanding of what is and is not supported, always use the online content. To copy code samples, always use the online content.

# Gplus Adapter User Guide

Working with Gplus Adapter for Salesforce

12/17/2025

---

## Contents

- 1 Working with Gplus Adapter for Salesforce
  - 1.1 How do I access Gplus Adapter?
  - 1.2 Integrating Interactions with Salesforce Lightning
  - 1.3 Pop out, move and resize Adapter
  - 1.4 Interaction events triggering Adapter to be maximized
  - 1.5 Supported features
  - 1.6 Using Gplus Adapter in multiple browser tabs
  - 1.7 Gplus Adapter might be restricted to only one browser tab
  - 1.8 Related Documentation

# Working with Gplus Adapter for Salesforce

Gplus Adapter for Salesforce enables you to handle your contact center functions from Salesforce. It integrates Salesforce features such as activity history update, screen pop, and click-to-dial.

## How do I access Gplus Adapter?

When Gplus Adapter is integrated in Salesforce, a phone icon is displayed in the lower left or lower right corner of the Salesforce window depending on how your organization had set it up for its users. To open a pop-up **login** dialog box, click the **phone** icon, then log in with your Adapter credentials.

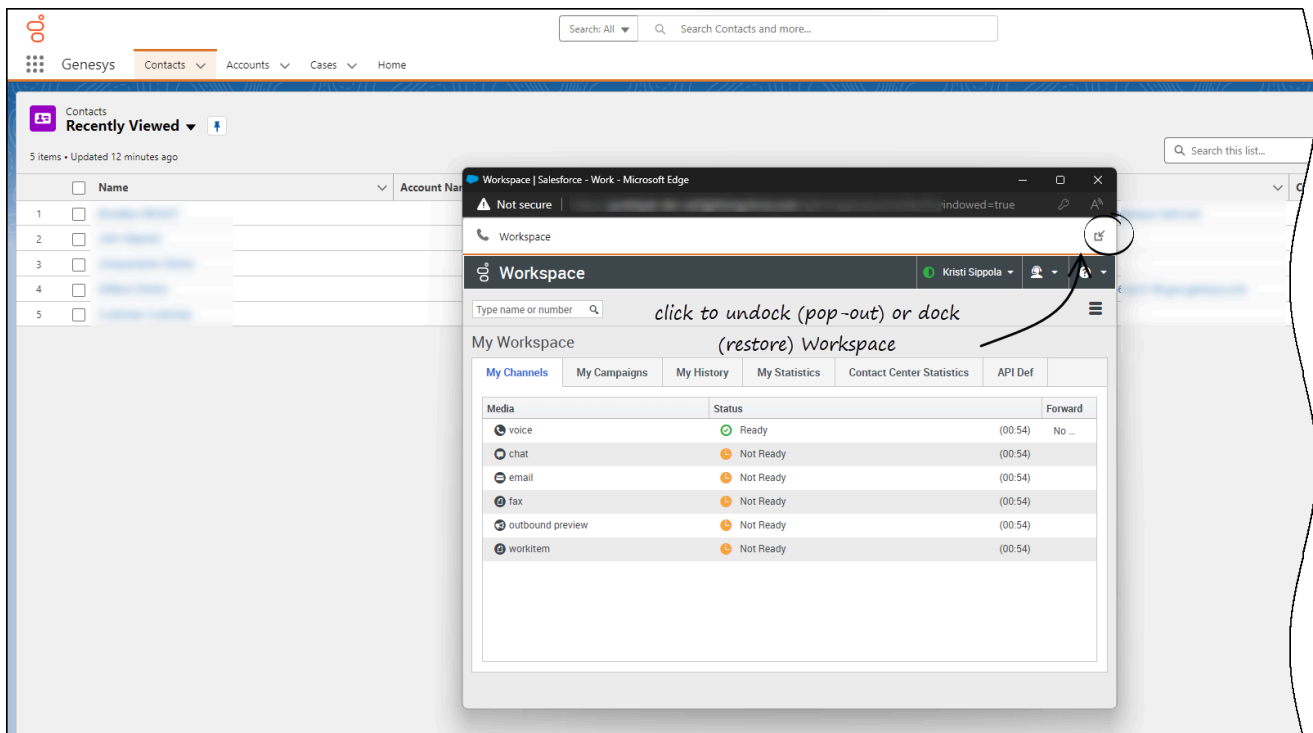
## Integrating Interactions with Salesforce Lightning

Gplus Adapter integrates functionality of the following interaction types with Salesforce:


- **Voice**
- **Chat**
- **SMS**
- **Email**
- **Outbound Preview**
- **Open Media Work items**

For more information about handling specific interaction types, refer to the [Genesys Agent Desktop help](#).


### Pop out, move and resize Adapter



By default, the Adapter window opens in the lower left corner in the Salesforce environment.

To move the Adapter window to a different location, undock (pop out) the window by clicking  in the upper right corner, then drag the Adapter window to a new location. Once you undock the window, you can move or resize the window as needed.

You can dock (restore) the window back to its original position by clicking .

Manually maximize or minimize the Adapter window by clicking .

### Interaction events triggering Adapter to be maximized

If you have minimized Adapter to handle other tasks in Salesforce, the following events automatically maximize the Adapter window:

- Receiving voice, chat, SMS, email, or workitem interactions
- Releasing interactions
- Marking Done interactions
- Receiving connections error notifications

- Receiving confirmation that an interaction has been processed

## Supported features

Gplus Adapter includes features that integrate with a Salesforce environment. Actions you take in Salesforce or Gplus Adapter are passed seamlessly between them.

The integrated features are:

- [Click-to-dial](#)
- [Screen pops](#)
- [Activity history](#)

## Using Gplus Adapter in multiple browser tabs

By default, you can work with Gplus Adapter in multiple Salesforce browser tabs. Gplus Adapter is available in each new Salesforce browser tab you open.

The following section describes how the main Gplus Adapter functions are supported in multiple browser tabs:

- [Click-to-dial](#): If an agent clicks-to-dial in one Salesforce browser tab, an outbound call is initiated in Adapter in all browser tabs. The agent can continue to handle the interaction in any open browser tab.
- [Screen pop](#): The screen pop is displayed in all browser tabs that are running Gplus Adapter. Screen pop FLOW, screen pop NEW\_RECORD\_MODAL, and creation and screen pop of new Salesforce record are triggered only in the active tab.
- [Activity history](#): The activity history on interaction Mark Done or Salesforce screen pop is created once for each interaction irrespective of how many browser tabs are running Gplus Adapter.

Genesys recommends logging in to Adapter in the first browser tab before opening Gplus Adapter in multiple tabs. Before using Adapter in any open browser tab or opening Adapter in a new tab, make sure that Adapter has finished operations in your active page and is fully loaded.

Refer to the [Genesys Agent Desktop help](#) for more information about using Agent Desktop in multiple browser tabs.

## Gplus Adapter might be restricted to only one browser tab

In some organizations, Gplus Adapter may be used only in the first Salesforce tab you use to login to Gplus Adapter; it is prevented by your organization's administrator from loading in a second browser tab. If Gplus Adapter is set up to prevent loading in a second browser tab, you will see the following message when you open a subsequent tab running Salesforce with Gplus Adapter: **Gplus Adapter is configured to be loaded in only one browser tab.**

## Related Documentation

- To learn how to use Gplus Adapter, see the [Genesys Agent Desktop help](#).