



This PDF is generated from authoritative online content, and is provided for convenience only. This PDF cannot be used for legal purposes. For authoritative understanding of what is and is not supported, always use the online content. To copy code samples, always use the online content.

Outbound Contact Deployment Guide

General Agent Desktop Interaction with OCS

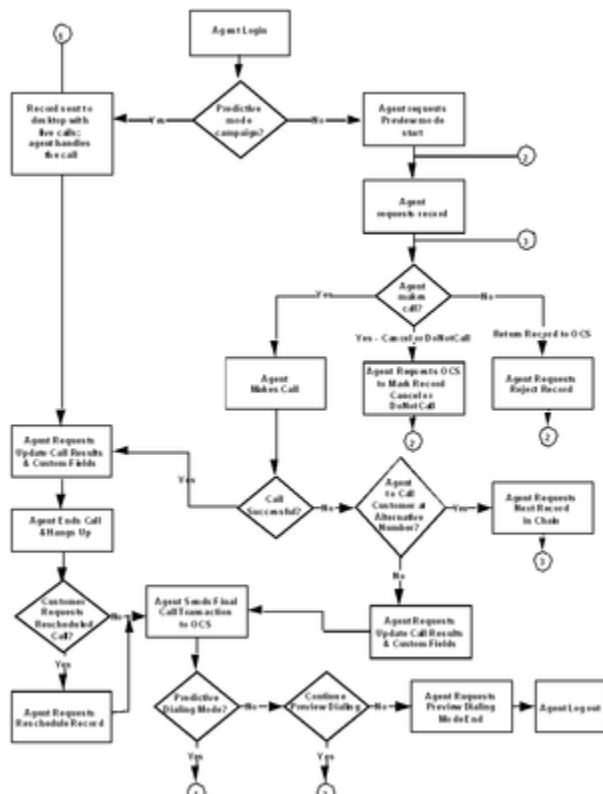
5/11/2025

General Agent Desktop Interaction with OCS

The following figure illustrates the data flow for a typical customer record.

Note:

This figure is not specific to any particular sequence of events.



Data Flow for Typical Customer Record