



This PDF is generated from authoritative online content, and is provided for convenience only. This PDF cannot be used for legal purposes. For authoritative understanding of what is and is not supported, always use the online content. To copy code samples, always use the online content.

Genesys Engage cloud Supervisor's Guide

[Submitting feedback \(v8\)](#)

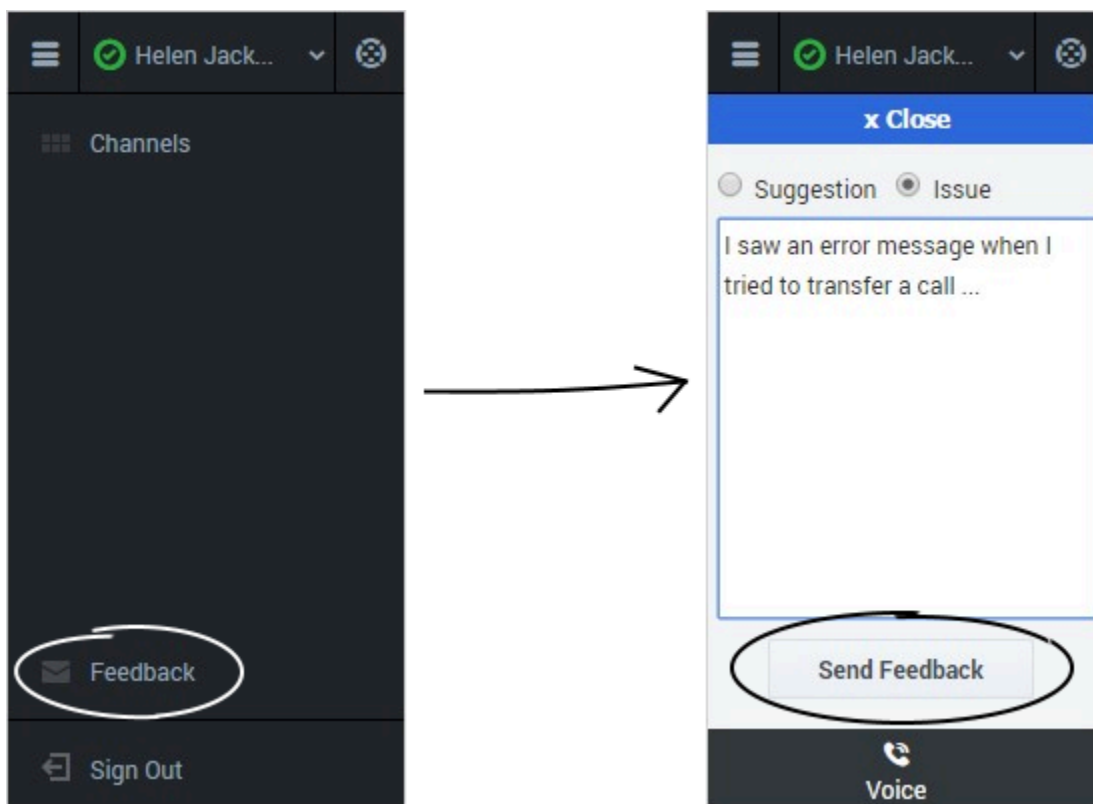
Submitting feedback (v8)

Important

This content may not be the latest Genesys Engage cloud content. To find the latest content, go to [Genesys Engage cloud for Supervisors](#).

Sometimes web-based applications don't work as expected. There might be network connection issues, or the system that sends you phone calls and chats might be slow or behaving in odd ways. Sometimes the sound quality of a phone call is bad. Sometimes an error message is displayed on your desktop. These and other issues are problems that should be reported to supervisors.

How to provide feedback when something goes wrong



Open the **Help** menu and select **Feedback** to open the **Feedback** window. Choose the type of

feedback that you want to give, either a suggestion or to report an issue, describe the problem or suggestion by typing in the text box, then click **Send** to submit your feedback. This information, along with logs about what you were doing in your most recent Agent Desktop session, are sent to Genesys and are available to Customer Care for later reference.

If for some reason the adapter becomes disconnected from your network and you have to close your browser and launch a new one to log in again, the adapter automatically opens the **Feedback** window to let you write a report about the disconnection problem immediately.

Once a feedback report is logged to you as a supervisor, contact Genesys Customer Care as soon as possible to provide the reporting user's name and DN at the time of the incident, as well as the approximate time the incident occurred. The Customer Care agent should be able to retrieve the relevant log to determine what the issue might have been.