



This PDF is generated from authoritative online content, and is provided for convenience only. This PDF cannot be used for legal purposes. For authoritative understanding of what is and is not supported, always use the online content. To copy code samples, always use the online content.

# Stat Server User's Guide

Stat Server Actions for Agent Workbin

12/15/2025

---

## Contents

- 1 Stat Server Actions for Agent Workbin
  - 1.1 Durable, Interaction-Related Actions
  - 1.2 Momentary, Interaction-Related Actions
  - 1.3 Retrospective, Interaction-Related Actions

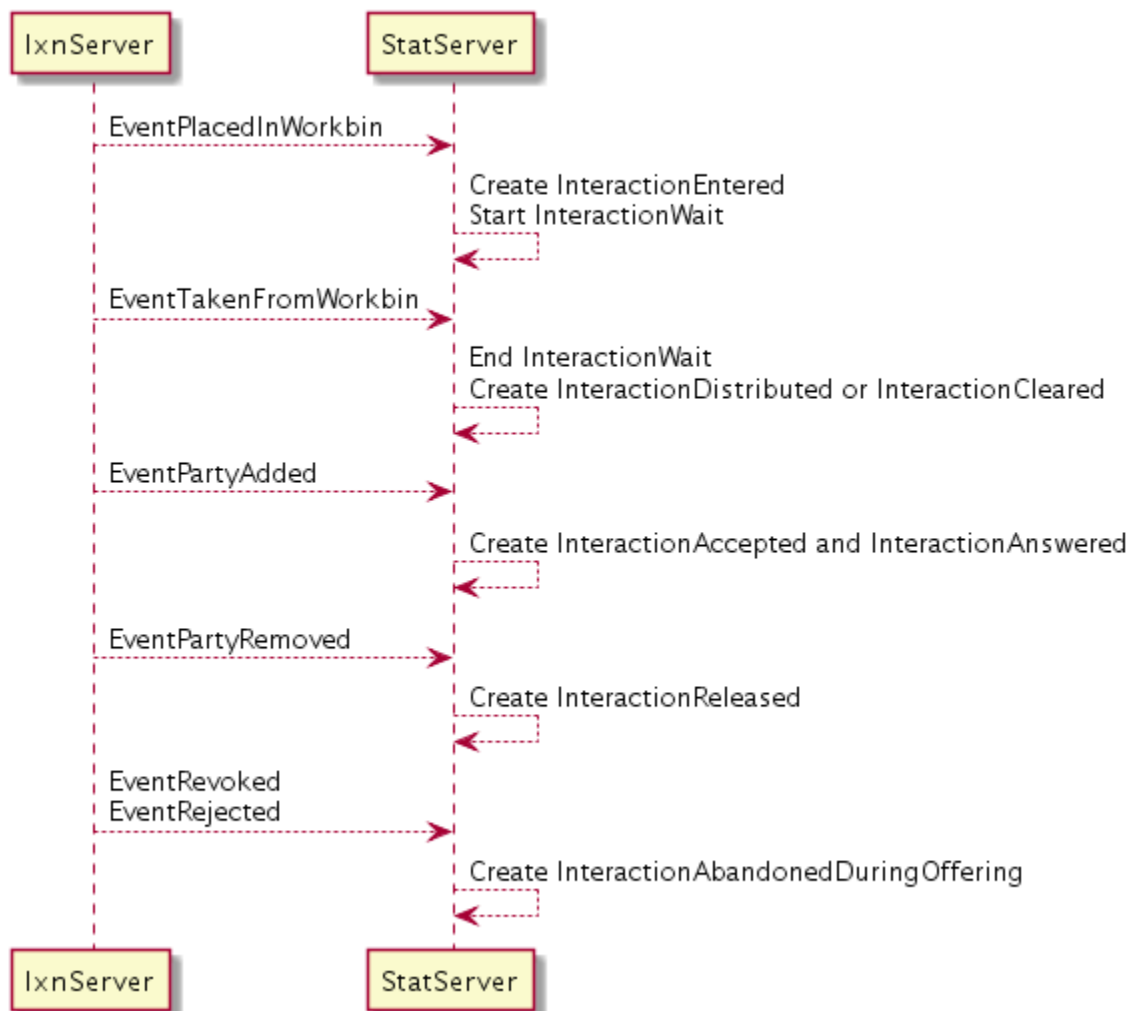
# Stat Server Actions for Agent Workbin

Starting with release 8.5.112.10, Stat Server supports Agent Workbin statistics. The agent workbin (<agent\_id>@<workbin\_type\_id>) is defined by the following two attributes from Interaction Server events:

- attr\_itx\_workbin\_type\_id
- attr\_itx\_agent\_id

Both attributes are added to **System Key-Value Lists** (system attributes) with the WorkbinID and WorkbinOwnerID key names.

## Agent Workbin related Actions generation



## Durable, Interaction-Related Actions

The following is the durable, interaction-related action that Stat Server generates on an Agent Workbin:

- **InteractionWait (Agent Workbin)**

## Momentary, Interaction-Related Actions

The following is the momentary, interaction-related action that Stat Server generates on an Agent Workbin:

- **InteractionEntered (Agent Workbin)**

## Retrospective, Interaction-Related Actions

The following are the retrospective, interaction-related actions, originated from Interaction Server that Stat Server generates on an Agent Workbin:

- **InteractionAbandonedDuringOffering (Agent Workbin)**
- **InteractionAccepted (Agent Workbin)**
- **InteractionAnswered (Agent Workbin)**
- **InteractionCleared (Agent Workbin)**
- **InteractionDistributed (Agent Workbin)**
- **InteractionReleased (Agent Workbin)**