



This PDF is generated from authoritative online content, and is provided for convenience only. This PDF cannot be used for legal purposes. For authoritative understanding of what is and is not supported, always use the online content. To copy code samples, always use the online content.

# Genesys Events and Models Reference

Network Attended Transfer Events

12/15/2025

---

## Contents

- 1 Network Attended Transfer Events
  - 1.1 EventNetworkCallStatus
  - 1.2 EventNetworkPrivateInfo

# Network Attended Transfer Events

## EventNetworkCallStatus

### Description

Contains all pertinent information about the current state of a multi-party network call. It is sent to all interested parties whenever the call's state changes.

### Contents

Event Attribute	Type
ANI	Optional
CallHistory	Optional
CallID	Mandatory
NetworkCallID	Optional
NetworkNodeID	Optional
CallType	Mandatory
ConnID	Mandatory
Cause	Optional
CustomerID	Optional
DNIS	Optional
Event	Mandatory
Extensions	Optional
NetworkCallState	Mandatory
NetworkPartyRole <sup>a</sup>	Mandatory
NetworkOrigDN	Optional
NetworkDestDN	Optional
NetworkDestState	Mandatory
Reasons	Optional
ReferenceID	Optional
Server	Mandatory
ThisDN	Mandatory
ThisDNRole	Mandatory
time	Mandatory
TransferredNetworkCallID	Optional

---

Event Attribute	Type
TransferredNetworkNodeID	Optional
UserData	Optional

a. This attribute is not present for events distributed by network T-Servers.

## EventNetworkPrivateInfo

### Description

This event is generated both in response to a `TNetworkPrivateService()` function call and when it is used to notify selected sets of clients of T-Server-specific information. This event indicates that one of two forms of data has been passed:

- Information supported only by certain T-Servers, and which is not covered by general feature requests.
- Notification about changes in T-Server behavior or device/call statuses.

This event can be distributed to the following clients:

- Those who made a request for the private service, `TNetworkPrivateService()`.
- Those registered on the specified device, depending on the nature of the service.
- Those who would otherwise be ineligible (for security reasons) for receiving given events, and who thus require additional registration in order to be notified.

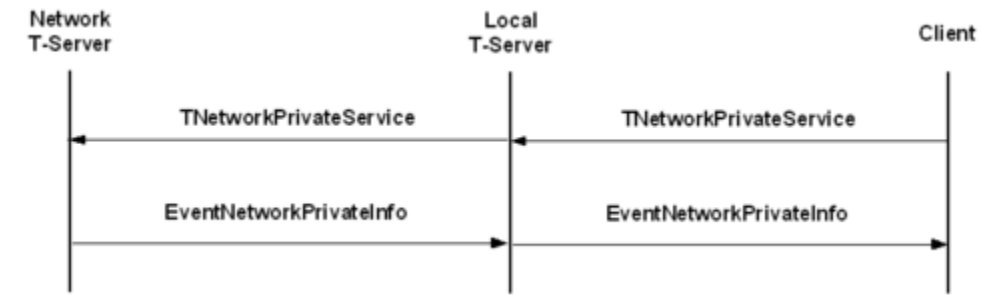
### Contents

Event Attribute	Type
PrivateEvent	Mandatory
Event	Mandatory
Reasons	Optional
UserData	Optional
Extensions	Optional
ReferenceID	Optional
Server	Mandatory
ConnID	Optional
ThisDN	Optional
NetworkCallState	Optional
NetworkPartyRole	Optional
NetworkOrigDN	Optional
NetworkDestDN	Optional

---

Event Attribute	Type
NetworkDestState	Optional
time	Mandatory

## Example



EventNetworkPrivateInfo Example